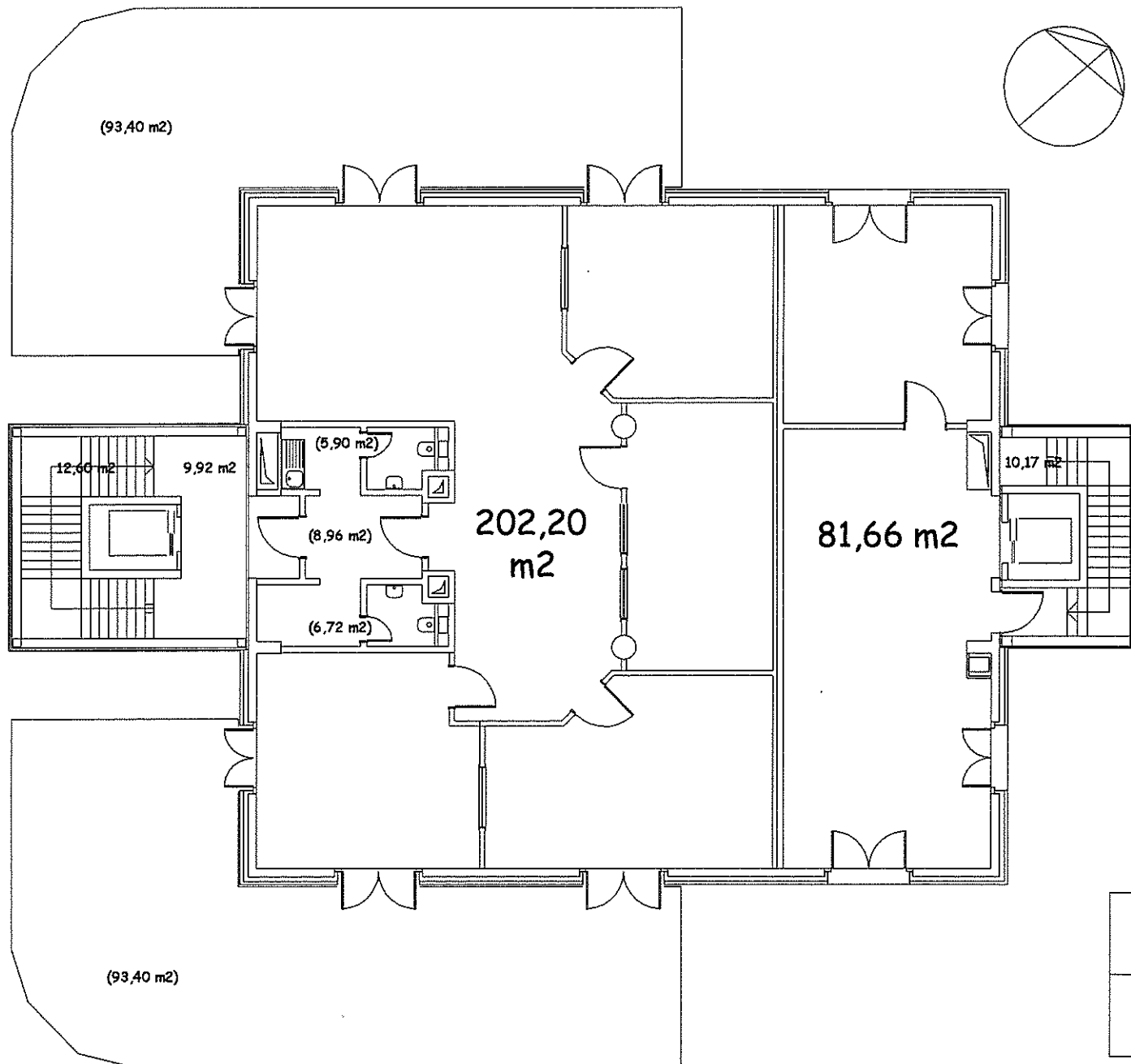


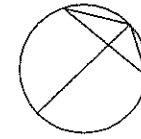
CTN 10
 Rez-de-chaussée
 1 / 150 ° octobre 2006

surface brute	557,68
surface nette	515,70

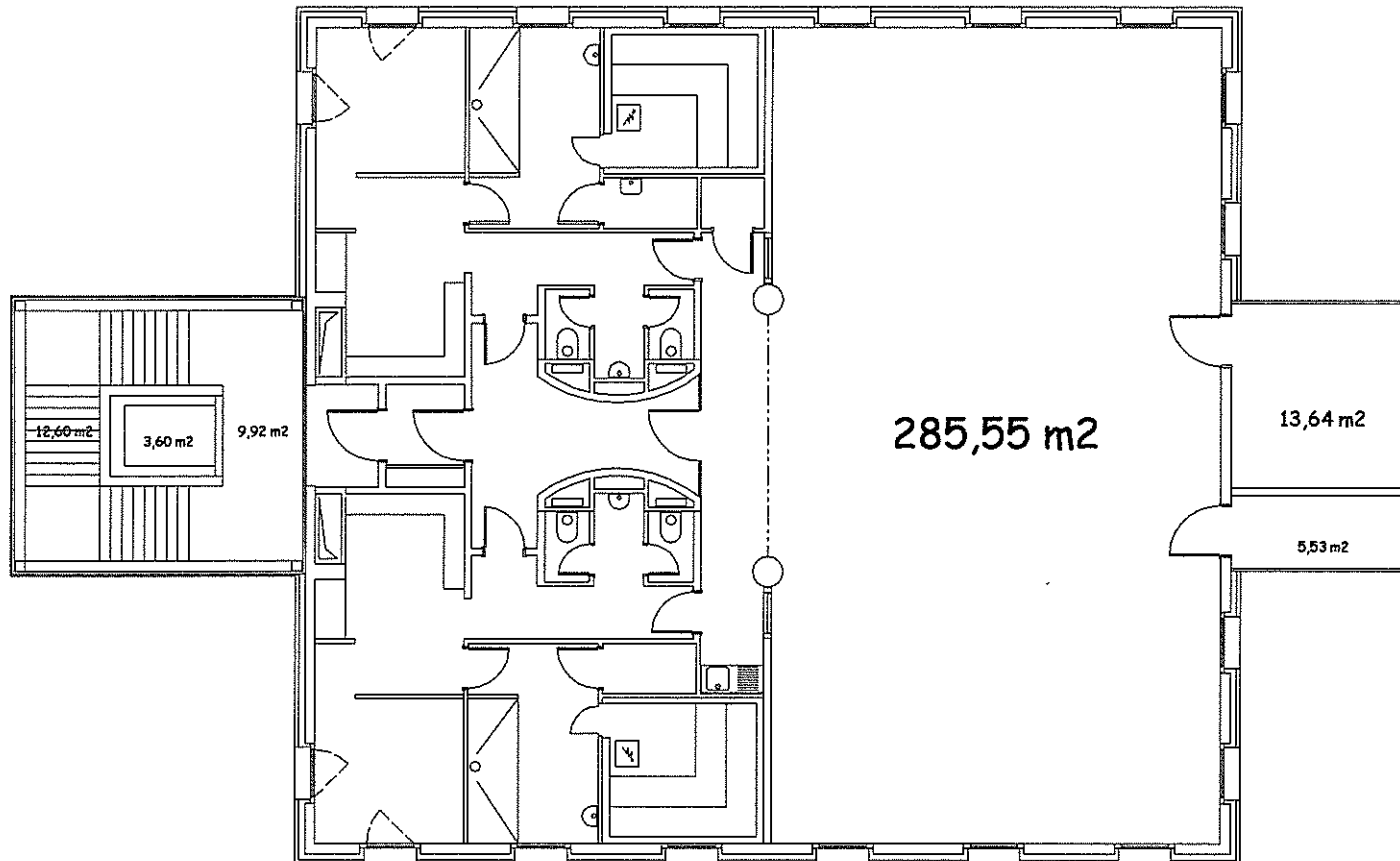


CTN 10
 1° étage
 1 / 150° octobre 2006

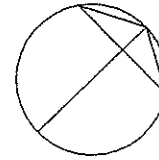
surface brute	368,92
surface nette	331,80



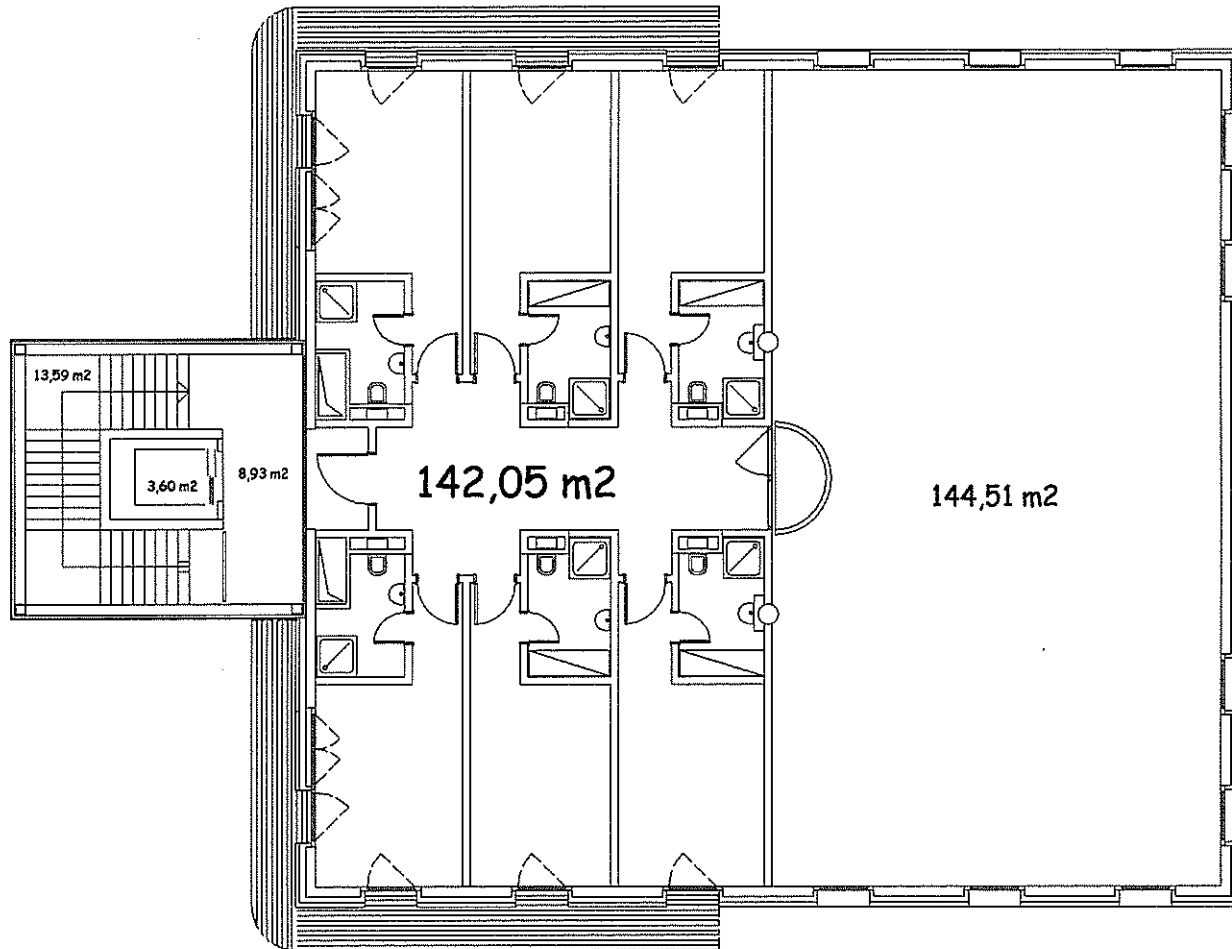
CTN 10
2° étage
1 / 150° octobre 2006



surface brute	369,75
surface nette	336,92



CTN 10
3° étage
1 / 150° octobre 2006



surface brute	350,90
surface nette	317,88