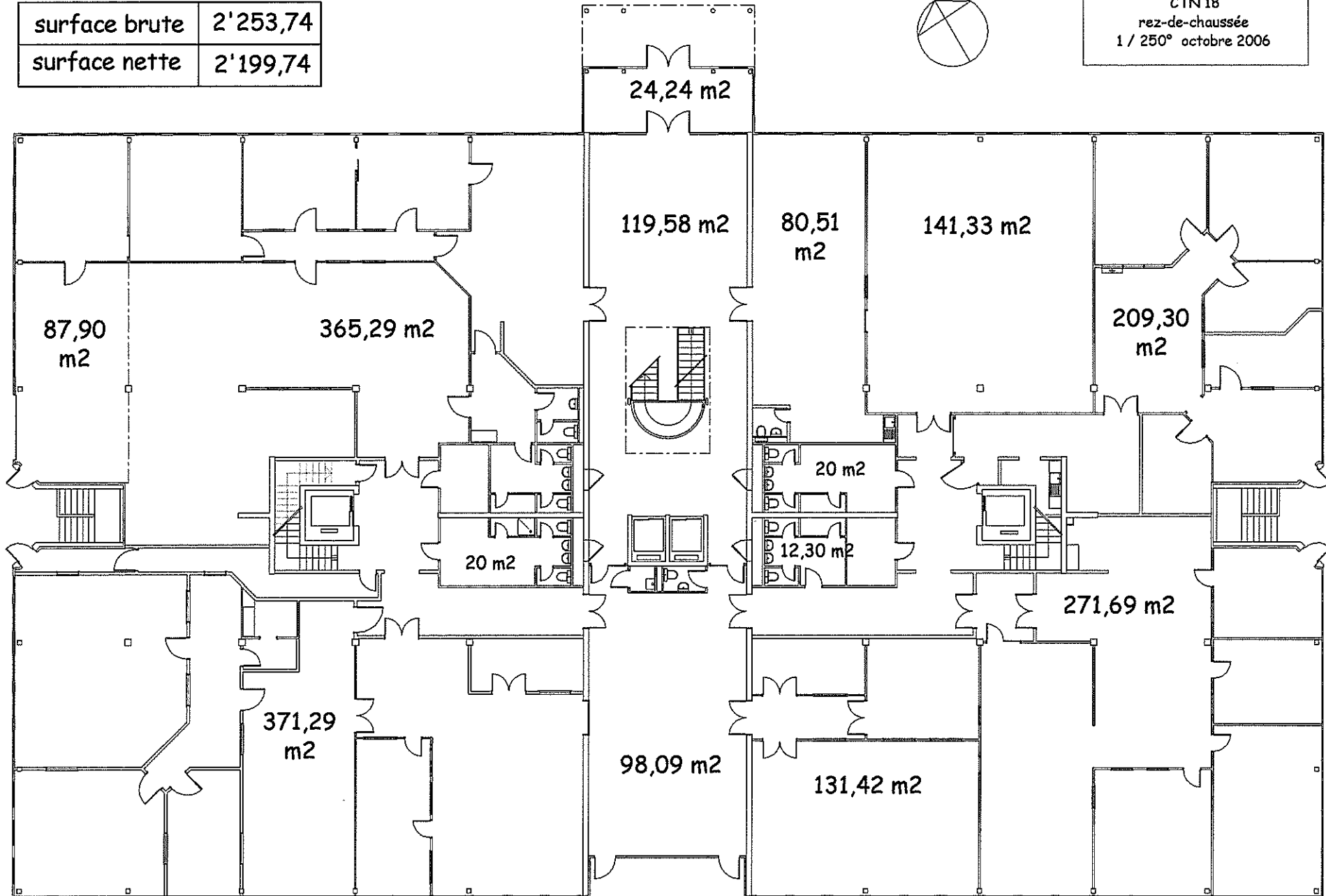
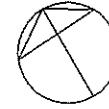


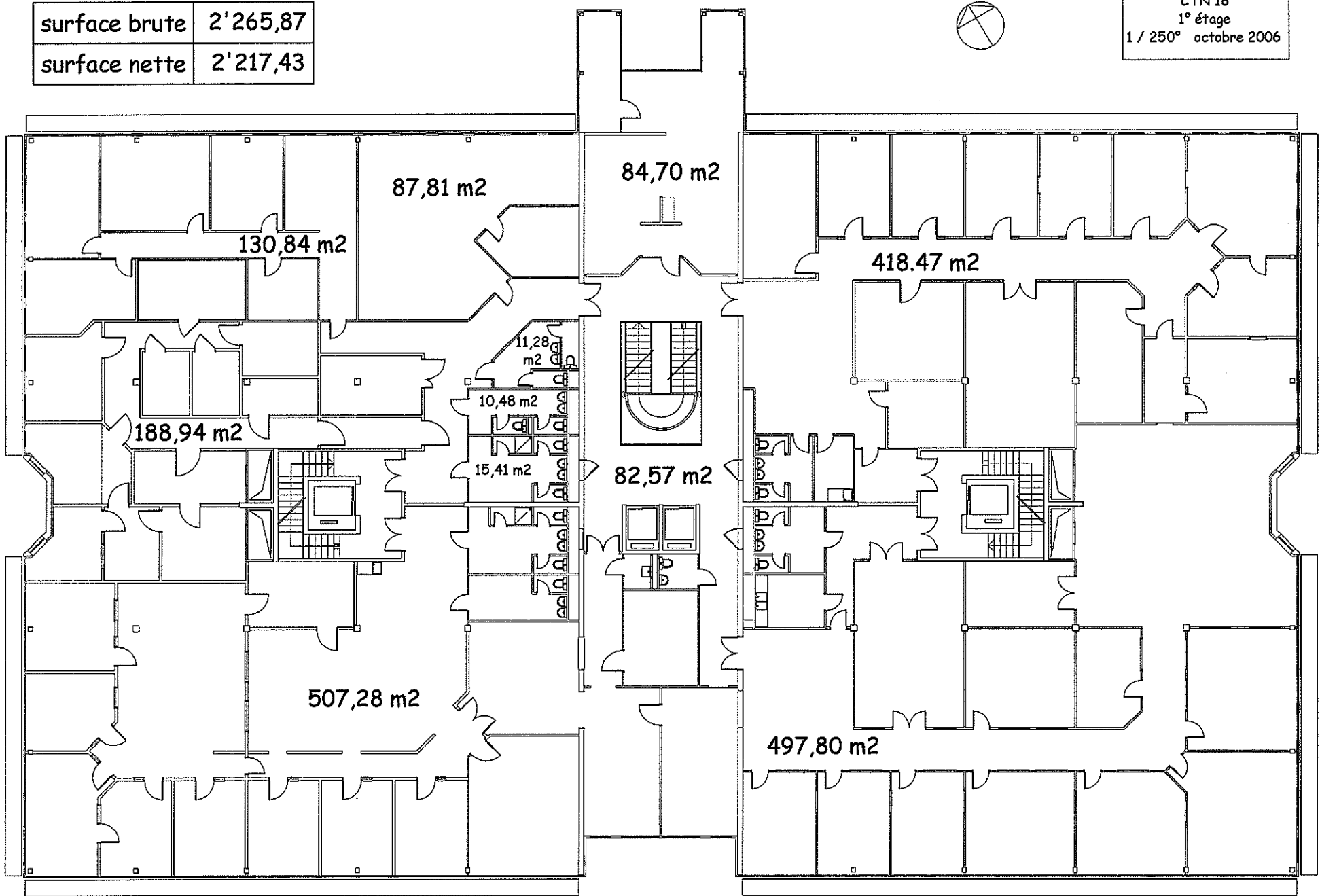
surface brute	2'253,74
surface nette	2'199,74

CTN 18
rez-de-chaussée
1 / 250° octobre 2006



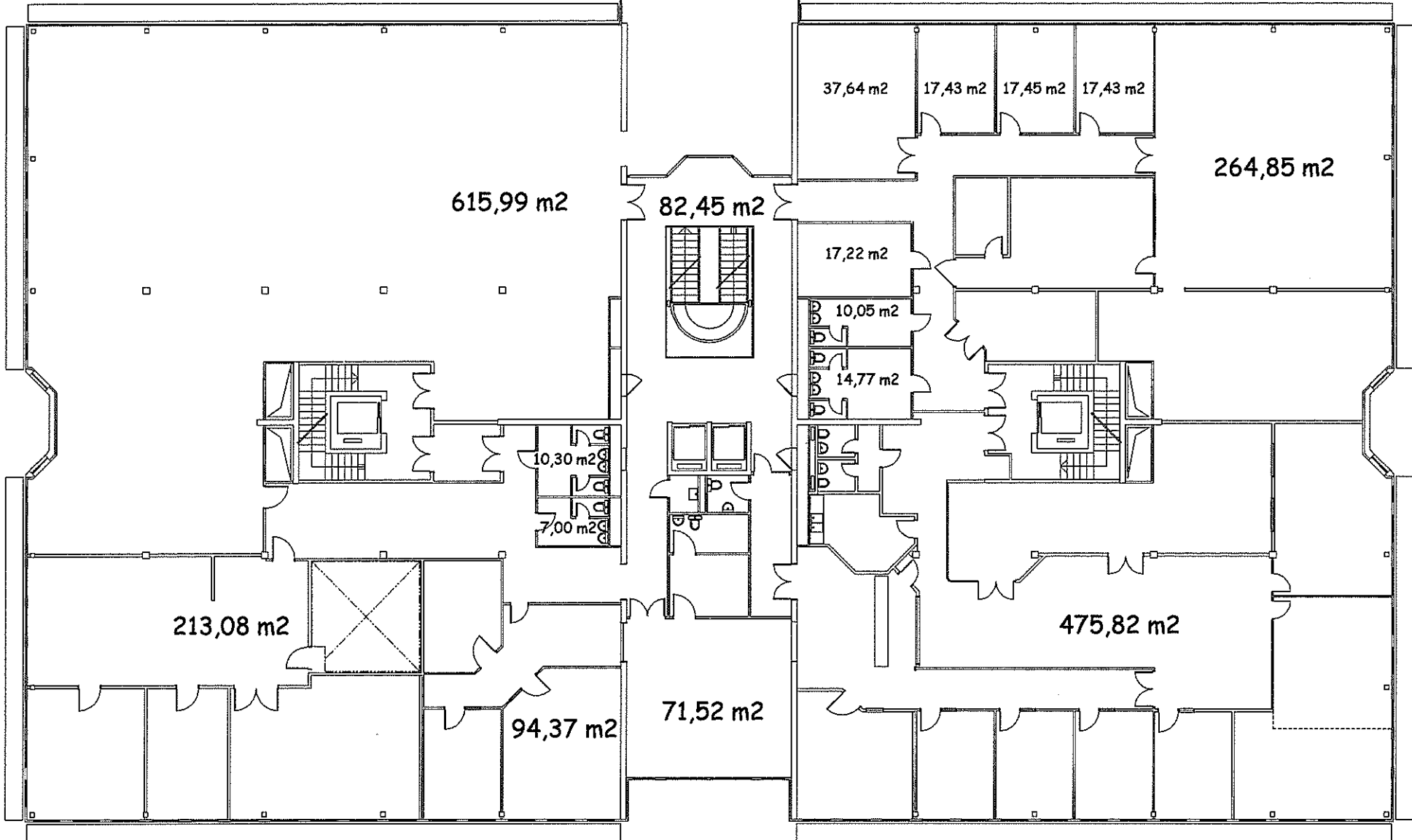
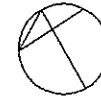
surface brute	2'265,87
surface nette	2'217,43

CTN 18
 1° étage
 1 / 250° octobre 2006



surface brute	2'277,20
surface nette	2'232,77

CTN 18
 2° étage
 1 / 250° octobre 2006



surface brute	1'174,43
surface nette	1'137,68

157,34 m²



CTN 18
3^o étage
1 / 250^o octobre 2006

429,15
m²

395,58
m²

74,28 m²

